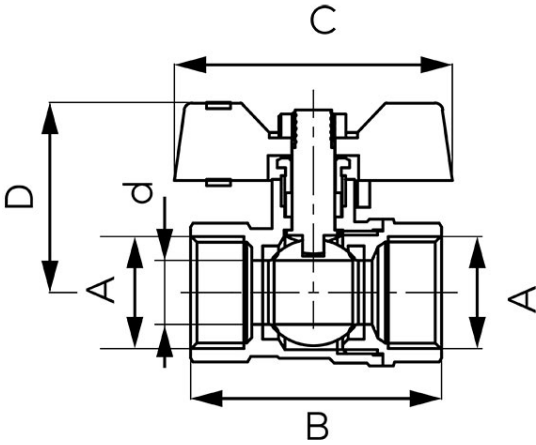




Code: **KFCM**

F-Comfort - Ball valve with butterfly, female-female

<https://www.ferrocompany.com/product-6135-KFCM.html>



- warranty: 5 years
- medium: water
- with gland and packing nut
- handle: metal butterfly
- body and ball material: brass
- brass CW617N-4MS - reduced lead and nickel content
- material of ball and stem seals: PTFE
- nominal operating pressure: 20 bar (PN20)
- nominal operating temperature: 100°C
- NICKEL FREE - the surface of the valve that may be in contact with water is not nickel plated

Code	DN	A	d [mm]	B [mm]	C [mm]	D [mm]	Kvs [m³/h]		
KFCM1	15	G1/2	12	47	52	35,5	5,34	24	120
KFCM2	20	G3/4	16	55,5	52	38,8	13,31	18	90
KFCM3	25	G1	21	63	67,5	49,5	21,28	10	60